

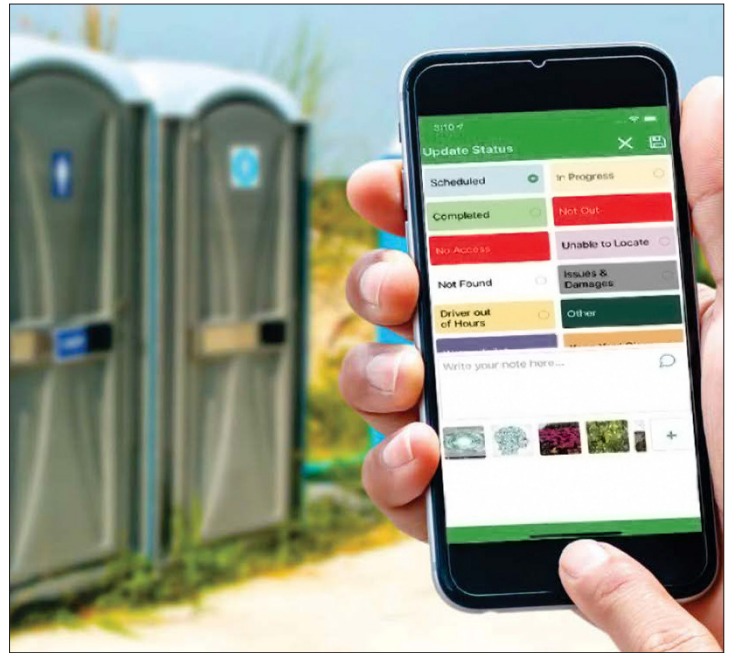
THE FUTURE OF WASTE COLLECTION

Mobile

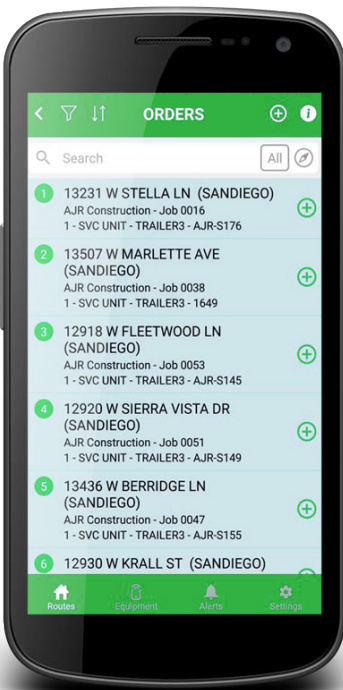
In the portable and septic business, information from the field operations is crucial for success and profitability.

The Routeware app is the simple, cost-effective way to observe and manage all aspects of your business – from managing field operations, dispatch, inventory, customer service, and billing.

Routeware allows you to monitor everything in the field in real time, from the comfort of your office. The driver application sends information directly to dispatch and customer service from the drivers' phones. Mobile order listing replaces printed orders and route sheets.



Mobile Application Features



- Compatible with both iOS and Android
- Provides real time updates and location records as work is completed
- Intuitive design makes experience easy for non-technical drivers
- Operates continuously regardless of cell phone coverage area (offline mode)
- Present customizable menus to fit your operational needs
- Tracks and reports exact inventory location
- Creates detailed service records with date, time, and GPS location of each and every service



Find out more at [Routeware.com](https://www.Routeware.com)

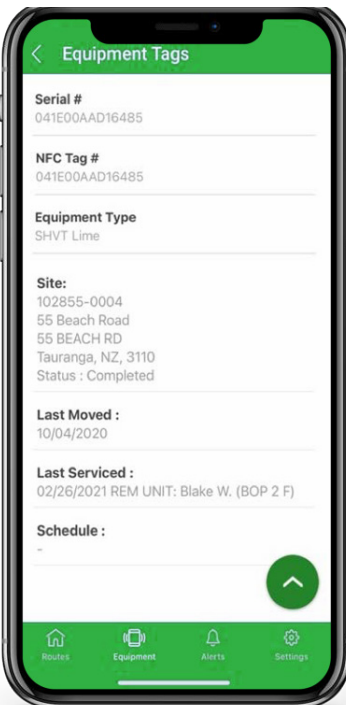
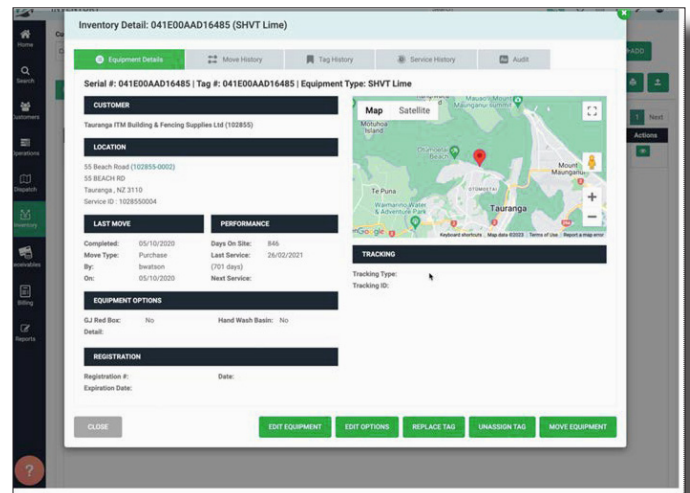
THE FUTURE OF WASTE COLLECTION

Inventory

Routeware resolves the need to have not only an exact unit count, but to know where every piece of equipment is, what condition it is in, and when it is scheduled next for service. Using NFC technology, Routeware's system meets the needs of the businesses by not only understanding, but also controlling your inventory of rental units.

Using an inexpensive NFC adhesive tag, the drivers' phone records the actual unit being serviced. By simply holding the phone to the tag, a record is created that provides:

- Unit Number
- Customer
- Location
- Service History
- Driver
- Date and time of service



The Routeware mobile app allows drivers or yard personnel to assign tags to equipment in the field or yard and create inventory records. Track deliveries, removals, damage, and status from the mobile application or the back office.

Routeware's inventory system will tell you how long a unit has been on rent or sitting in the yard. It will create manifests for delivery drivers, and keep you advised of inventory counts so that you do not over- or under- commit your equipment.

Gain the visibility you need into your equipment performance and utilization!

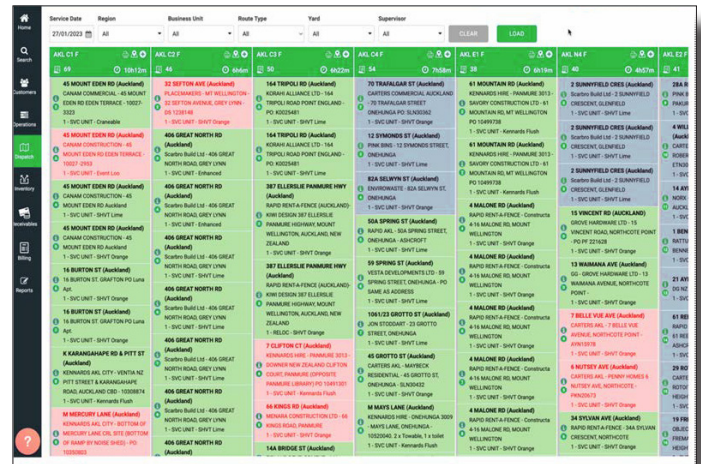
THE FUTURE OF WASTE COLLECTION

Dispatch

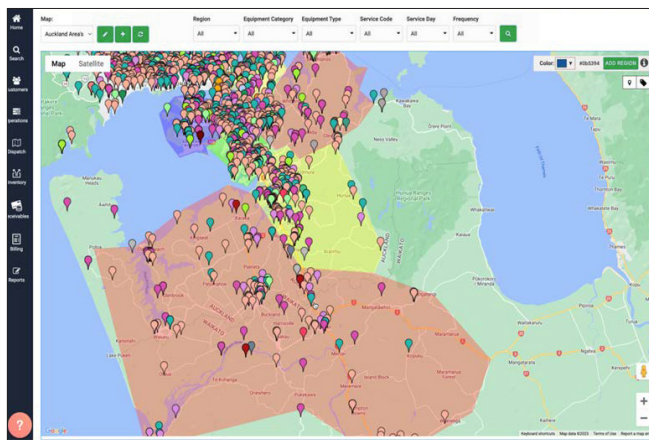
Routeware was created with an understanding of the constant variables faced daily in the portable and septic businesses.

The dispatch module of Routeware uses the exact GPS captured locations of the services, customer schedules, and available resources, including optimized routes, to streamline this process.

Dispatchers can see orders for the day and driver locations with updated statuses when field staff performs services. New orders created during the day are alerted to the dispatcher with an audible alert and then shown in an Unrouted queue waiting to be sent to the appropriate driver.



Mobile Application Features



- Replaces paper with digital route sheets
- Built-in route optimization
- Visual dispatch allows quick and efficient order management
- Assign orders to nearest vehicle in real-time
- Provides push notifications of emergency changes to the driver's phone
- Alerts driver of order updates
- Supplies overview route maps
- Enables dispatcher to create zones for optimal tracking
- Guides users for easy route changes
- Visualize routes in maps for easy identification of overlaps

Find out more at [Routeware.com](https://www.Routeware.com)

THE FUTURE OF WASTE COLLECTION

Billing & Payments

The Routeware platform was designed to allow for easy management of standard and customer-specific service and rental rates. Set standard rates based on regions and areas, but also offer your larger customers discounted rates. This is all managed and audited seamlessly within Routeware. In addition to your recurring charges, Routeware manages and bills completed service records from dispatch.

Invoicing is flexible to meet your business's needs – billing can be performed daily, weekly, bi-weekly, monthly, every 28 days, in advance or arrears, and on-demand. Not only is it flexible, but billing is simple. Routeware eliminates the process of pushing files back and forth between systems – no more maintaining and manually reconciling paper orders, spreadsheets, and daily driver logs. Routeware streamlines the process with a few clicks! Email invoices directly to customers with click-to-pay functionality and a full customer portal to give your customers convenient options to remit payment.

Payment processing is performed directly in Routeware with integrated credit/debit card and ACH processing. Easily authorize and charge your customers' accounts. Enroll customers in automatic payment – get paid on time, every time, without any hassle for you!

General ledger entries for Routeware transactions can be formatted for export and easily imported directly into any accounting software.