



# MEDICAL WASTE SOFTWARE

Easily plan, track, and report your medical waste pick up, transport, and billing.



Streamline your entire medical waste operation with cloud-based electronic medical waste manifesting, scheduling, routing, and invoicing to increase efficiency and grow your business.

## ROUTEWARE HELPS YOUR MEDICAL WASTE MANAGEMENT OPERATION:



Lower costs



Eliminate paper



Optimize service



Stay OSHA Compliant

## SMART SOLUTIONS



### Improve Efficiency

Route customers up to 30 days in advance and operate more stops per day at the lowest cost.



### Support Drivers on the Go

Give drivers real-time access to the information they need, right when they need it — from any Apple or Android device.



### Streamline Billing & Payments

Make billing easier, faster, and more accurate with automated processes and convenient self-service features.



### Make Smarter Decisions

Run comprehensive reports to gain insights and keep your business moving forward.

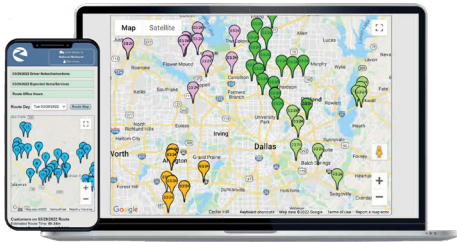


### Stay Compliant

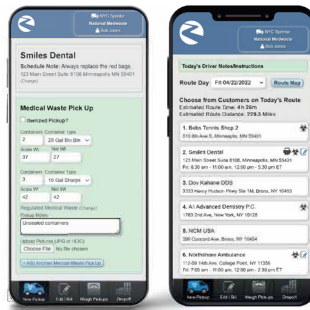
Stand out from the competition with a training library of nearly 20 OSHA courses to support you and your customers.

Ready to simplify your medical waste management business and get ahead of the competition? **Get started today at [Routeware.com](https://www.routeware.com)**

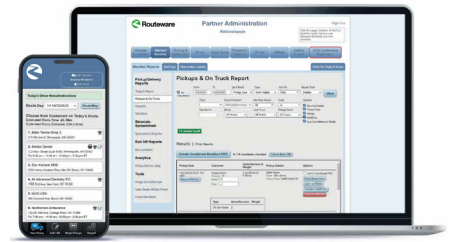
# MODERNIZE YOUR MEDICAL WASTE OPERATION



## EFFICIENT ROUTING & IMPROVED SERVICE



## EASY-TO-USE MOBILE TOOLS



## INSTANT BILLING & FASTER PAYMENTS

### Optimized Routing

- Plan routes up to 30 days in advance and easily modify routes to increase density.
- Choose between full route optimization, fixed route order, or a blend of both to meet your operational needs.

### Schedule Management

- Create multiple schedules for multi-service customers, move customers across routes, and schedule recurring and one-time stops.
- Plan ahead with route duration and distance estimates, and view schedules up to one year in advance.

### Paperless Medical Waste Manifests

- Create electronic manifests using any Apple or Android device.
- No more pre-printed forms, filing, or special barcodes required.

### Driver-friendly Mobile Tools

- Keep connected with driver tools available on any Apple or Android device.
- Drivers can view added stops, view route details and turn-by-turn navigation, reoptimize routes, save field notes and photos, and more — with no driver or device limits.

### Accurate Billing & Payments

- Create invoices directly from service ticket data, capture extra services, and manage pricing, invoices, and fees.
- Get paid faster with online self-service tools that let customers pay invoices, securely save credit card or ACH information, and enroll in autopay.

### Comprehensive Reporting

- Access hundreds of out-of-the-box and customer reports to run your business better.
- Maximize profits with accounting reports, including reports on sales taxes, sales commissions, late fees, one-time fees, and autopay utilization.

### OSHA Training & Compliance

- Stay competitive with Routeware's comprehensive online OSHA compliance program.
- Provide your customers with the OSHA training they need, covering topics such as Bloodborne Pathogens, HIPAA, HazCom, Sharps Safety, Personal Protective Equipment (PPE), DOT training, and much more.

Ready to simplify your medical waste management business and get ahead of the competition? **Get started today at [Routeware.com](https://www.routeware.com)**